



**TP-LINK®**

## **Quick Installation Guide**

**TL-PS110U**

**Single USB2.0 Port Fast Ethernet Print Server**

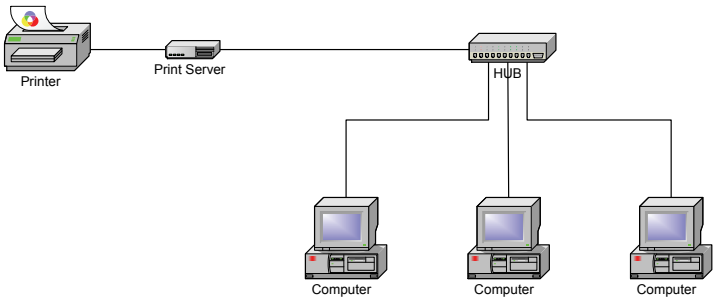
**TL-PS110P**

**Single Parellel Port Fast Ethernet Print Server**

## A Before you start, you should prepare the following items:

- One Windows-based PC with print server setup CD
- One printer
- One printer cable
- One HUB

## B Wired Network with Print Server:



## C Hardware Installation:

- 1 Turn off the printer's power.
- 2 Connect the print server to your printer with the supplied printer cable.
- 3 Turn the printer's power on.
- 4 Plug the AC power adapter into the power connector on the print server.
- 5 Wait 10 seconds as part of the print server's Power On Self Test (POST).

## D Software Installation:

- 1 To enable network communication with print server, your computer must have a proper IP address, e.g. 192.168.0.100.
- 2 Insert the setup CD into your CD-drive, and the following message appears.

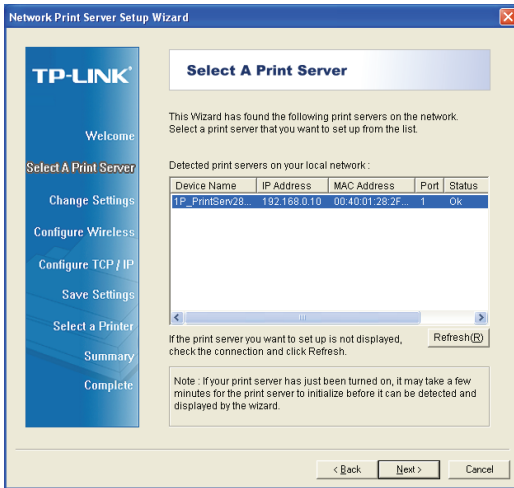


- 3 Choose **Setup Wizard** to install the print server and configure the connected printer.

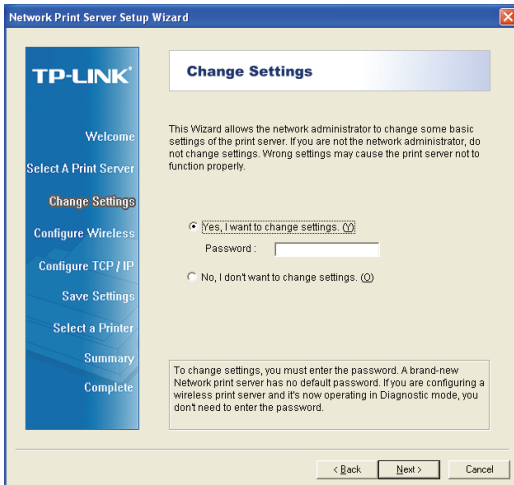


- 4 Click **Next**, the wizard will automatically discover the print server.

- 5 From the **Select A Print Server** screen, select the print server that you want to configure and click **Next**.



- 6 On the **Change Settings** screen, select **No** or **Yes**:



Click **No** if you want the print server to keep using the default IP address and keep the default settings, and then click **Next**.

- IP address: 192.168.0.10
- Subnet Mask: 255.255.255.0

Click Yes if you want change IP address to the print server, and then click **Next**.

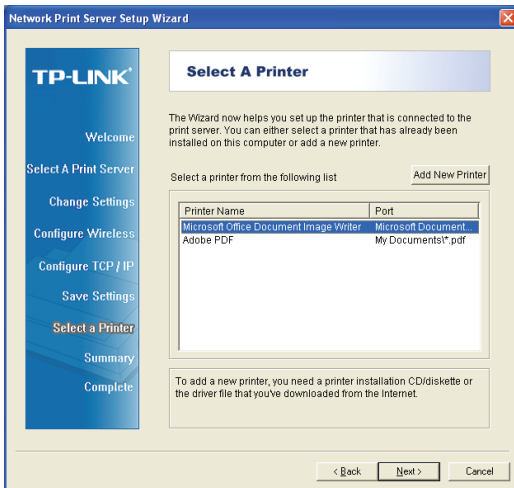


**Note:**

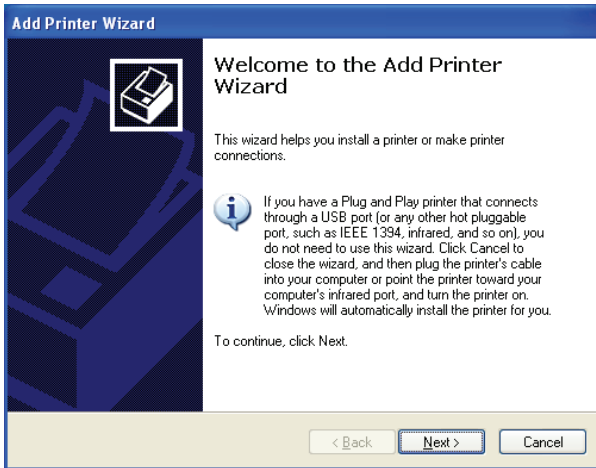
The IP address of print server must be within the same subnet as your network adapter.

- 7 On the **Select A Printer** screen, select an already configured printer from the list, click **Next** and then **Finish** to complete the installation.  
or

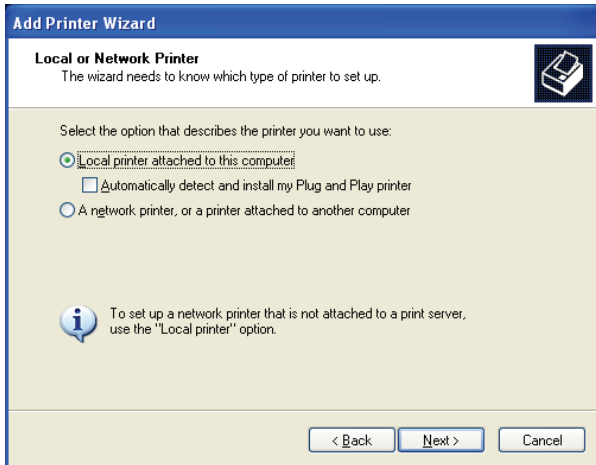
Select **Add New Printer** if the print server is connected to a printer that hasn't been installed before and does not appear in the list.



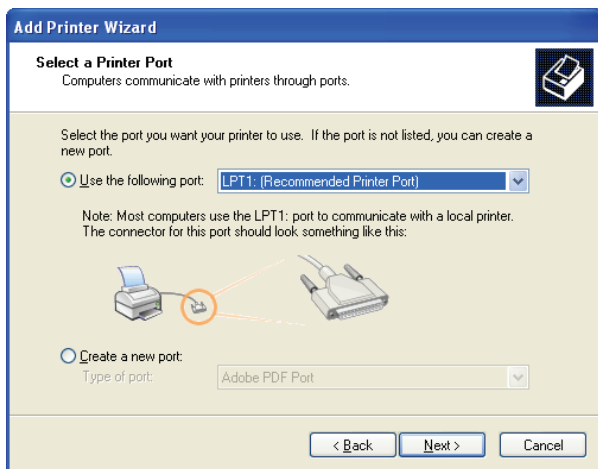
- 8 Click **Add New Printer** to launch **Windows Add Printer Wizard**.



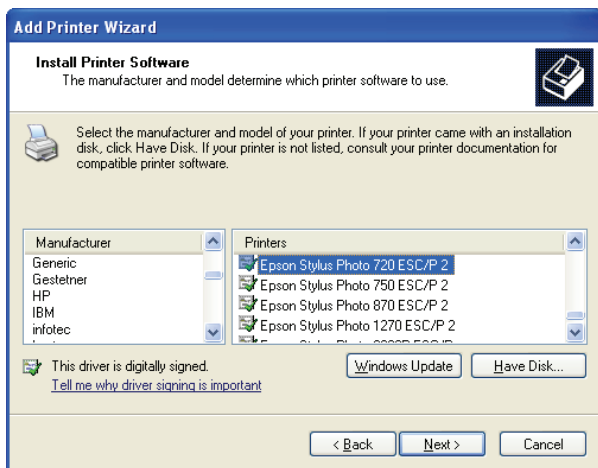
- 9 Click **Next** and select **Local Printer**, make sure the **Automatically detect and install my Plug and Play printer** check box is **NOT** checked. Then click **Next**.



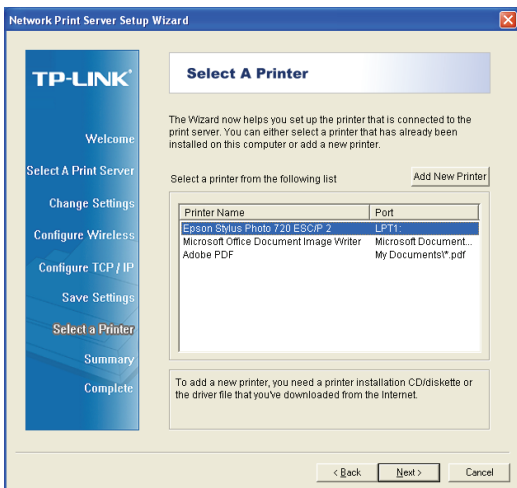
- 10 Make sure the **Use the following port** radio-button is clicked and select **LPT1:** (**Recommended Printer Port**) from the pull-down list. Then click **Next**.



- 11 Select **Manufacturer** and **Printer** from the lists of printer's driver. Then click **Next**.

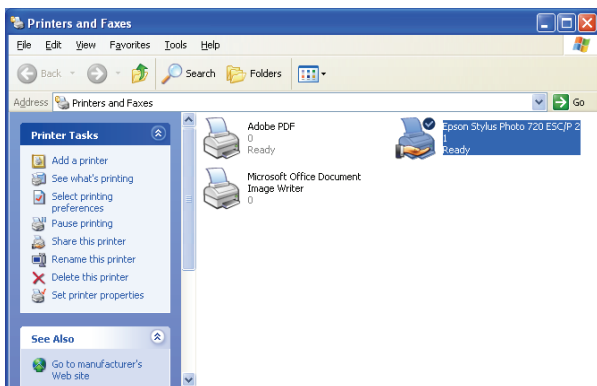


- 12 If you already have the printer's driver installed, you will be asked whether to keep it or to replace it. Click **Next**. Supply a name for the printer and choose whether you want to make it your default printer. Then click **Next**.
- 13 Then, choose whether you want to share the printer with other network users, print a test page (please select **No.**), etc. Select the appropriate radio-button and click **Next** and **Finish**.
- 14 In the setup wizard, finish the installation by highlighting the installed printer in the **Select a Printer** list and click **Next** -> **Finish**.

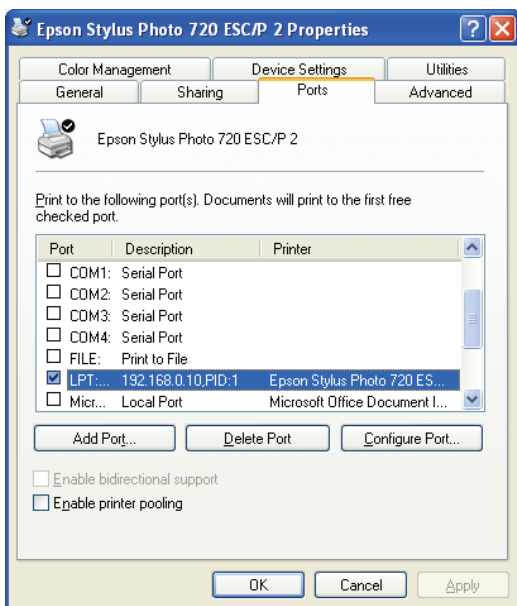




- 15 From Windows system, go to **start -> Printers and Faxes** and highlight your newly installed printer.



- 16 Right-click, select **Properties -> Ports** and verify that the print server's port appears.



17 Go to **General**; click **Print Test Page** to verify the configuration.

18 Done.



**Note:**

If you wish to install more print servers, start setup wizard from your Windows Start menu: **start -> All Programs -> Network Print Server -> PSWzard** and repeat the installation procedure.

All contents are subject to change without prior notice.

